



SARAH DECORATIVE SOLUTIONS

Deals in : All types of exterior interior building decorative materials

Dasrathpali | Next to Goyal Plaza | Sevoke Road | Siliguri - 734001
Darjeeling | (W.B.) | Mob. : 8348048027

www.sarahint.com | sales@sarahint.com | customer-care@sarahint.com



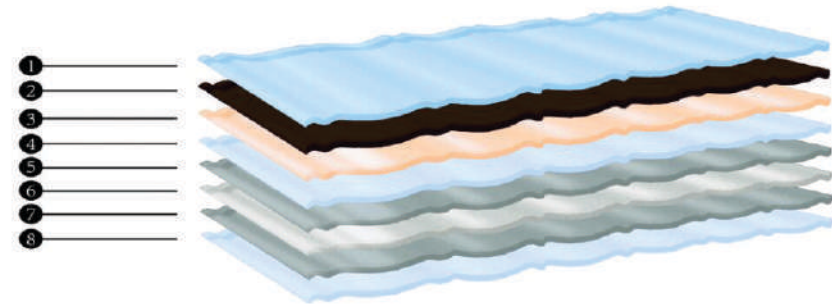
STONE COATED METAL ROOFING TILE



Roofing Product Comparisons

Protection/ Benefits	Stone Coated Roof Tile	Asphalt Shingle Tile	Concrete & Clay Tile	Wood Shake
Weight	1.25-1.5 lbs./sq.ft.	2.5-4 lbs./sq.ft.	6-15 lbs./sq.ft.	1.5-2 lbs./sq.ft.
Fire	Class A	Class A	Class A	Class B or C
Wind Warranty	120 mph	60-110 mph	Wind damage	Wind damage
Hail Resistant Impact Resistant UL2218	Class 4 *Warranted against hail penetration	Class 3 or 4 *Not all meet 2218	Cracks easily, hail can cause severe damage	Class 3 or 4
Snow / Ice	Freeze/Thaw Resistant	Freeze/Thaw Resistant	Not waterproof, when wet can absorb 15% of weight in water	Limited Freeze/Thaw Cycles
Earthquake	Lightweight+Added Shear Strength	Moderate weight with no added shear strength	Heaviest weight with no added shear strength	Light to moderate weight with no added shear strength
Warranty	30 Years	25 Years	25-50 Years	25-40 Years
Environmental Impact	Low Impact *Often no tear-off needed *Recycled material *End of life recyclability	High Impact *High embodied energy *Tear-off required *Limited recycling use	High Impact *High embodied energy *Tear-off required *Limited recycling use	Moderate Impact *Low embodied energy *Renewable resource *Tear-off required *End of life recyclability
Required Maintenance	Low	Low	Moderate to High (broken tiles)	High (fire resistance maintenance required)

Coating Layers



	Layer	Function	Advantage
1	Clear acrylic glazing layer	Increase brightness and bonding strength, to prevent rain leak to the lower layer and granular structure	Special formula to double protect colored stone from dropping.
2	Colorful stone layer	Cut off UV to protect the grass-root, reducing rain noise and improve decorative function.	Basalt sand to make a 3D outlook of the tile
3	Acrylic adhesive bonding layer	Structure of adhere the upper and down layer, to protect the underlying structure	Special formula to protect sand from dropping in adverse weather.
4	Protection layer	To protect aluminum zinc layer, enhance the paint daubs function of the layer surface	Only from qualified supplier, can be checked by anti-fingerprint test.
5	Aluminum zinc layer	High heat reflective rate and strongly corrosion resistant; It can increase lifespan and energy saving.	Alu-zinc coating from qualified supplier, lifespan 50 years.
6	Steel grassroots	High strength steel, metal construction of colorful stone coated metal roof tile basis	Only from qualified supplier, can be checked by anti-fingerprint test.
7	Aluminum zinc layer	High heat reflective rate and strongly corrosion resistant; It can increase lifespan and energy saving.	Alu-zinc coating from qualified supplier, lifespan 50 years.
8	Protection layer	To protect aluminum Zinc layer	Only from qualified supplier, can be checked by anti-fingerprint test.

Features of stone coated metal roofing tile

1. High quality durability

Metal roofing tile use the high-strength SGLD to be based material, and deal with multilayer protective film so that it has excellent durability. It is the best roofing material so far and pass all kinds of authoritative tests

2. Amazing economy

Metal roofing tile is large in size but light in weight, so it is convenient to use. It just need 2 workers to finish Installation for a common building in 3-5 days.

3. Easy installation

Metal roofing tile is very light and easy to cut, so it is suitable for all kinds of buildings, especially for secure execution on heavy grade roofing and tower. Compared with traditional cement tile, metal roofing tile is more coincide and compact because of reasonable design. It won't be separated in violent storm.

4. Reduplicate execution

Metal roofing tile won't bring heavy pressure to the building because of its light weight. It can be executed repeatedly on old roofing tile if you fix them well.

5. Good fire resistance

Metal tile contains Class A anti-fire materials. It has strong fire resistance.

6. Hail resistance

Metal roofing tile can resist cold, frozen and slip etc. It can reduce the weight of snow cover on the building. It's safe and dependable.

7. Earthquake resistance

The reason why earthquake causes great loss is heavy roofing tile But DHL light metal roofing tile can reduce the pressure of building, so it will decrease loss in earthquake greatly.

8. Storm resistance

Metal roofing tile is suitable to use in rain lasting area. You don't need to worry about leakage and noise. Chad on the surface can absorb and avoid noise effectively.

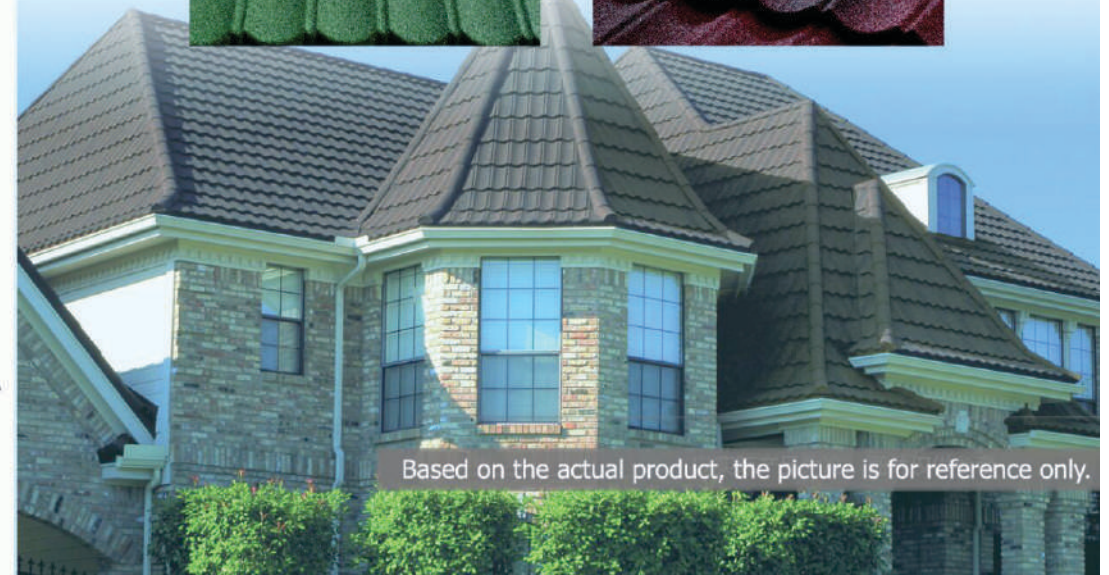
9. Wind resistance

Metal roofing tile is just 1/6 weight of traditional tile, but the design and construction technique can tell the theory of storm resistance. It won't separate even under 190km/h.

Bond Tile

Specification

Overall size	1340mm*420mm*0.40mm
Length of Cover	1290mm
Width of Cover	370mm
Area Coverage/Tile	0.477m*2
Tiles/SQM	2.1pcs
Weight/Tile	2.8Kg



Based on the actual product, the picture is for reference only.

Classic Tile

Specification

Overall size	1340mm*420mm*0.40mm
Length of Cover	1290mm
Width of Cover	370mm
Area Coverage/Tile	0.477m*2
Tiles/SQM	2.1pcs
Weight/Tile	2.8kg

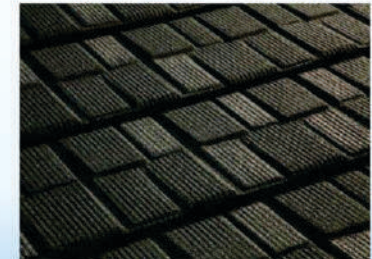


Based on the actual product, the picture is for reference only.

Shingle Tile

Specification

Overall size	1340mm*420mm*0.40mm
Length of Cover	1290mm
Width of Cover	370mm
Area Coverage/Tile	0.477m*2
Tiles/SQM	2.1pcs
Weight/Tile	2.8kg



Based on the actual product, the picture is for reference only.

Roman Tile

Specification

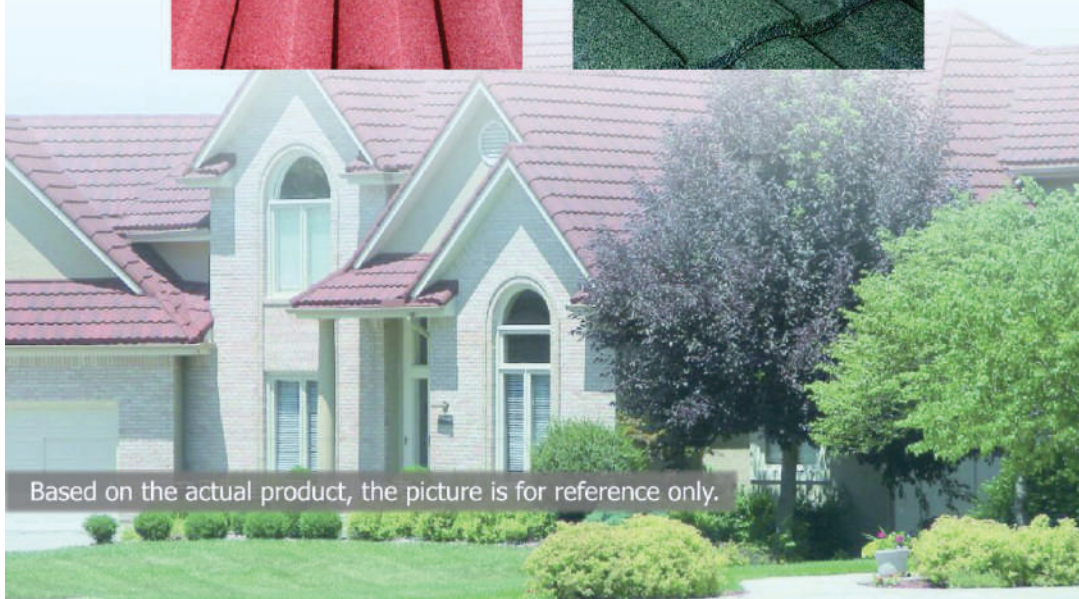
Overall size	1300mm*420mm*0.40mm
Length of Cover	1250mm
Width of Cover	370mm
Area Coverage/Tile	0.462m*2
Tiles/SQM	2.16pcs
Weight/Tile	2.8kg



Milano Tile

Specification

Overall size	1360mm*420mm*0.40mm
Length of Cover	1290mm
Width of Cover	370mm
Area Coverage/Tile	0.477m*2
Tiles/SQM	2.16pcs
Weight/Tile	2.8kg



Based on the actual product, the picture is for reference only.



Based on the actual product, the picture is for reference only.

Wooden Tile

Specification

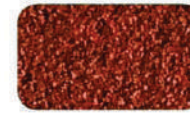
Overall size	1340mm*420mm*0.40mm
Length of Cover	1290mm
Width of Cover	370mm
Area Coverage/Tile	0.477m*2
Tiles/SQM	2.16pcs
Weight/Tile	2.8kg



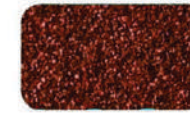
Based on the actual product, the picture is for reference only.

Main Colors

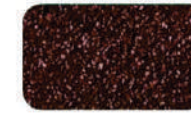
Solid Color Series



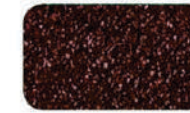
Orange



Iron Oxide Red



Rose Madder



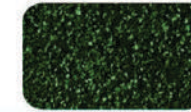
Agate Red



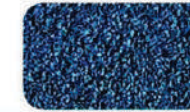
Coral Red



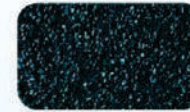
Straw Yellow



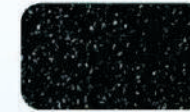
Emerald Green



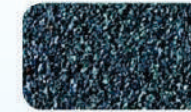
Wathet Blue



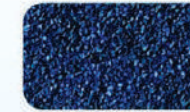
Peacock Green



Black



Grey

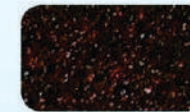


Moon Blue

Multiple Color Series



Beige Red



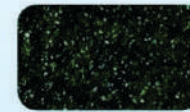
Henna



Brown



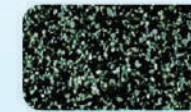
Auburn



Dark Green



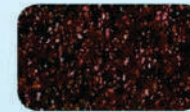
Melon Yellow



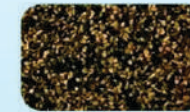
Grey White



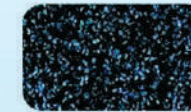
Clay Brown



Brick Red



Sandal Brown

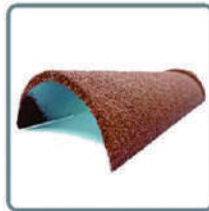


Sapphire



Chestnut Red

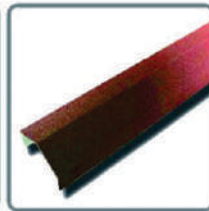
Main Accessories



Circular Hip



Round Cap



Angle Hip



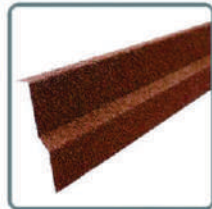
Ridge Hip



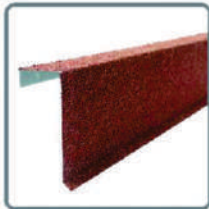
Valley Tray



Eaves Flashing



Side Flashing



Box Barge Cover



Flat Sheet

Installation Cases





Factory Show



Deals in : All types of exterior interior building decorative materials
Dasrathpali | Next to Goyal Plaza | Sevoke Road | Siliguri - 734001
Darjeeling | (W.B.) | Mob. : 8348048027
www.sarahint.com | sales@sarahint.com | customercare@sarahint.com